



KEMENTERIAN PENDIDIKAN DAN KEBUDAYAAN
UNIVERSITAS NEGERI YOGYAKARTA
JURNAL NATAPRAJA

Alamat : Jl. Colombo No. 1 Karangmalang Yogyakarta Telp. (0274) 548202, 586168 (Psw. 241)

LETTER OF ACCEPTANCE

We are pleased to inform you of the article with a title:

“ Collaboration Between The Government and The Private Sector In Handling COVID-19 In The Sleman District”

Submitted by:

Nama : Inggi Miya Febty

Institution : Universitas Muhammadiyah Yogyakarta

Based on the results of the peer review process, the article was accepted for publication on **Jurnal Natapraja: Kajian Ilmu Administrasi Negara**, Volume 9, Number 1, May 2021.

Jurnal Natapraja: Kajian Ilmu Administrasi Negara has been accredited by the Ministry of Research, Technology and Higher Education based on Decree No. 85 / M / KPT / 2020.

We will inform you for the final proofread and before we publish the article.

Yogyakarta, 5 January 2021

Best regards,
Editor in Chief

Pandhu YUANJAYA, MPA

HALAMAN JUDUL

**KOLAORASI PEMERINTAH DENGAN SWASTA DALAM PENANGANAN
PANDEMI COVID-19 DI KABUPATEN SLEMAN**

SKRIPSI

Diajukan Guna Memenuhi Persyaratan Untuk Memperoleh Gelar Sarjana Strata I
Pada Fakultas Ilmu Sosial Dan Politik Program Studi Ilmu Pemerintahan



Disusun Oleh:

INGGI MIYA FEBTY

20170520042

**PROGRAM STUDI ILMU PEMERINTAHAN
FAKULTAS ILMU SOSIAL DAN ILMU POLITIK
UNIVERSITAS MUHAMMADIYAH YOGYAKARTA**

2020

HALAMAN PENGESAHAN

SKRIPSI

**KOLAORASI PEMERINTAH DENGAN SWASTA DALAM PENANGANAN
PANDEMI COVID-19 DI KABUPATEN SLEMAN**

Oleh:

**INGGI MIYA FEBTY
20170520042**

Telah diuji dan dipertahankan didepan Tim Penguji
Program Studi Ilmu Pemerintahan Fakultas Ilmu Sosial Dan Ilmu Politik
Universitas Muhammadiyah Yogyakarta

Pada :

Hari/Tanggal: Senin, 07 Desember 2020

Tempat : Zoom 4

Waktu : 14:00-15:00

SUSUNAN TIM PENGUJI

Ketua



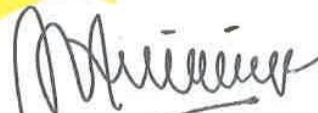
Sakir Ridho Wijaya, S.IP., M.IP.
NIK. 19891106201604 163 156

Penguji 1



Dr. Dian Eka Rahmawati, S.IP., M.Si.
NIK. 19741227200004 163 067


Penguji 2



Dr. Dyah Mutiarin, M.Si.
NIK. 19711108201004 163 089

Mengetahui,

Ketua Program Studi Ilmu Pemerintahan



Dr. Muchamad Zaenuri, M.Si
NIK. 19660828199403 163 025

GOVERNMENT AND PRIVATE COLLABORATION IN HANDLING COVID-19 PANDEMIC IN SLEMAN DISTRICT

**Inggi Miya Febty
Sakir
D Mutiarin
DE Rahmawati**

Science Program P Governing , Faculty of Social Science and P olitik , University of M uhammadiyah Yogyakarta, I ndonesia

E-mail : Inggimiyaf@gmail.com : mas.sakir@fisipol.umy.ac.id :
mutiarin@yahoo.com : dianekarahmawati93@gmail.com

ABSTRACT

The research question is how the district government collaborates through the task force, MCCC and volunteers in handling the COVID-19 pandemic in Sleman Regency. This research aims to describe and analyze the collaboration of the Regency government through the task force, MCCC in handling the COVID-19 pandemic in Sleman Regency; to describe and analyze supporting and inhibiting factors in collaboration between district governments through the task force, MCCC and volunteers in handling the COVID-19 pandemic in Sleman Regency. This type of research is a type of qualitative research with a case study design that will describe and analyze the collaboration of the Regency government through a task force, MCCC and volunteers in handling the COVID-19 pandemic in Sleman Regency. The data collection methods used were interviews and documentation. The data analysis technique used qualitative data analysis. The results of this study can be concluded that the government and Muhammadiyah as private parties have established relationships and resulted in collaboration. The existence of the COVID-19 pandemic has made the government form a special team to deal with the pandemic, namely the task force, the COVID 19 program created by the Task Force to coordinate with the central government and private elements. For the government, MCCC is a partner in capturing aspirations, while for MCCC the government is a means of realizing aspirations in a broader context.

Keyword: Government Collaboration, Disaster Management, COVID-19.

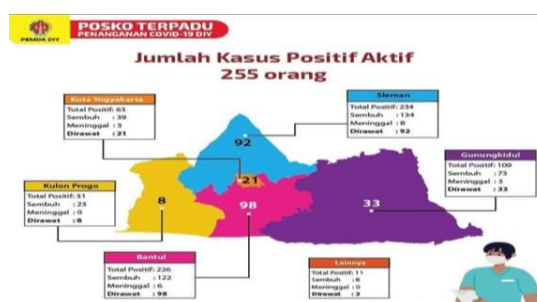
INTRODUCTION

At the end of 2019, the world was hit by a viral disaster that hit the respiratory system with a very threatening life value. The virus can cause respiratory illness and death from acute pneumonia. In mid-2020, the virus was identified as COVID-19 (Severe Acute Respiratory Syndrome Coronavirus 2 / SARS-CoV-2). The COVID-19 virus is a virus that spreads from person to person. This new type of virus comes from the corona virus. Corona can attack anyone from children, adults, the elderly, nursing mothers, and pregnant women.

In responding to COVID-19 in its early days, the Indonesian government did not take the virus seriously until the first case was found in March 2020. Findings of these cases continue to increase and the number is getting higher. At the end of the month Juni, its spokesman for the government

Penanganan Corona COVID-19 Achmad Yurianto until July number of cases throughout Indonesia amounted to 106 336 cases of infection. Of that number, 4,975 people died, and 62,138 recovered. Meanwhile, the Yogyakarta provincial health office revealed the number of cases in July as follows:

Figure 1. Data on COVID-19 cases in Yogyakarta



Source: Jogja Public Relations, July 2020

Based on the data above, the number of cases in Yogyakarta was 1,180 with a cure rate of 808 people and 20 deaths. The highest number of cases in Yogyakarta was in Sleman Regency with 234 cases. K emudian accretion of cases, followed by the District of Bantul 226 cash us, Kota Yogya 63 cases, Gunung Kidul 109 cases, Kulon Progo 31 cases and the other 11 cases.

In the data search results monitoring Sleman Regent and Chairman of the Task Force COVID-19 (Sri Purnomo) (2020) states that in dealing with this case, the leadership has a strategy. The main task of the COVID-19 task force is to control and deal with COVID-19. In its implementation, the task force involves all departments and levels that are integrated and organized. For example, the health office will become the health coordinator of the task force. Its main task is to ensure Sleman health services in all facilities provide health services for patients related to COVID-19. (Purnomo, 2020)

In the findings of information data for Sleman Regency, M Nurhadi (2020) revealed that in handling the pandemic, the Sleman Regional Government collaborated with various sectors, both from government and from the private sector. In addition to government elements represented by the task force, handling the COVID-19 pandemic also involves private parties such as mass organizations, one of which is Muhammadiyah through the *Muhammadiyah Disaster Management Center* (MDMC) volunteer agency in charge of coordinating all Muhammadiyah activities in assisting the implementation of Government performance against COVID-19. (Nurhadi, 2020)

Muhammadiyah in its participation as a social movement that was born in Yogyakarta certainly makes tempat birth as Posat and pilot important movement. Its influence that is evenly distributed in almost all districts is influenced by the distribution of charities and their activists. Sleman is one of the important areas in the Muhammadiyah movement because in this area many charity businesses have been built, such as hospitals, schools, and universities. Even at the level of the Muhammadiyah Regional Leadership, PDM Sleman is the region with the largest number of Muhammadiyah cadre doctors, this is then seen in the response to COVID-19 in PDM Sleman which appears since the beginning of February (Yayum, 2020)

The cooperation between the Sleman and Muhammadiyah governments in disaster management has been carried out long before the COVID outbreak. In 2010 during an eruption of Mount Merapi Muhammadiyah with PLB and PKU menjadian Office of Sleman PDM and some schools into refugee shelters and community empowerment recovery post disaster impact, especially in the pilot to build a shelter (Barori, 2010).

MDMC is an institution or an element in the structure Muhammadiyah leadership form the structure are in the leadership of the region, the central leader hingghah area. MDMC was founded in 2010 in Yogyakarta which aims as disaster management and disaster recovery. The early establishment of the MDMC, was initiated by Muhammadiyah when realizing disaster relief and management in Sunami Aceh, then formed a body called the *people village organizer* in Yogyakarta during the 2006 Yogyakarta earthquake and the eruption in 2010. So seen from the formation of MDMC it is relevant if it strengthens its activities in Yogyakarta. (MDMC Profile, 2016)

Joko, through an interview, revealed that MDMC was not only collaborating with the government during this pandemic , but every time there was a natural disaster, Muhammadiyah always participated in helping the Sleman Regency government . The MCCC also took action such as distributing masks and providing understanding to the community in the COVID-19 disaster, which the program helps the government in overcoming COVID-19 . T idak only that MCCC also has complete facilities to deliver services and implementation in order to assist the government in tackling COVID 19. The strategies are undertaken covering by moving all resources at all levels Muhammadiyah leadership element with autonomous organizations together N G O like, LAZIS (Institute Amil Zakat Infak Shodaqoh , Social Service Council, Aisiyah , also with the aim of preventing the corona virus and in the Sleman environment in particular (informant Joko, 2020)

Sleman Regent Sri Purnomo explained outbreak COVID-19 not only just cause to health, but resulted in other sectors as well , including the economy. Most people find it difficult to meet their daily needs. In fact , many people were dismissed from their work. Sleman Regency is one of the areas with the most positive patients in Yogyakarta. However, the processing of private companies by the Sleman government can minimize the economic and social impact of COVID-19 as well as speed up processing of patients and those suspected of interacting with patients. (Purnomo , 2020)

The basic concept of this research is taken from the researcher Kick Emerson & Tina Nabatchi entitled *Collaborative Governance Regimes*. In this research, it focuses on three indicator points in the dynamics of correlation, including: *Principled engagement* (movement of shared principles), *shared* motivation and

capacity for joint action (Emerson & Nabatchi , 2015). Therefore, the existence of these three components is expected to be the basic material of this research.

indicators in the dynamics of kolaoras include: *Principled engagement* (movement of shared principles), *shared motivation* and the *capacity for joint action* (Emerson & Nabatchi , 2015). Therefore, the existence of these three components is expected to be the basic material of this research.

This shows that handling the COVID-19 pandemic cannot be handled alone, but handled collaboratively. From the description, I am keen to raise the governance of non natural disasters COVID-19 by lifting the title " KOLABORASI GOVERNMENT AND THE PRIVATE SECTOR IN THE HANDLING OF PANDEMIC COVID-19 IN THE DISTRICT SLEMAN".

METHOD

This type of research is a qualitative research case study design, namely conducting investigations and analyzing case studies in depth. (Creswell, 2018) . The research will focus in Sleman, the data used in this study are primary data and secondary den gan by interviewing as many as five speakers, namely, the Chairman of the Task Force, Koorinator Task Force, Chairman of the MCCC, MCCC and Volunteer Coordinator. And sukender data, namely documentation such as photos regarding the cooperation of the task force and the MCCC in dealing with the COVID-19 pandemic in Sleman Regency. Al-Hamdi Ridho DKK menyatakan t ek nik data analysis through 4 simultaneous flow of activities include: collection and management of data, selection of data, analysis between variables and verification of data, interpretations and conclusions towing . (Al-Hamdi Ridho DKK, 2020)

RESULTS AND DISCUSSION

Handling the COVID-19 pandemic in Sleman Regency is not only the responsibility of the government , but also our responsibility. There are non-governmental organizations participating in handling COVID-19 in Sleman Patent Regency, namely the private sector. D ith the collaboration of information and can shering in disaster management is also commonly called *Collaborative Governance*. Collaboration between the government and the private sector or with community

organizations can be interpreted as a new innovation in government governance. Yang involving stakeholders outside of government stakeholders, such as the public private partnership to achieve a common goal, which is rated to handle a problem can not be handled by itself but mem inta assistance to stakeholders. K olaborasi public private communication was good and the routine to solve problems and achieve common goals.

In order to reduce the dam pack of the COVI D-19 virus , especially Sleman Regency. In mid -2020 , the Sleman government is still implementing policies designed to break the chain of the corona virus , such as creating a Task Force for Handling COVID-19 in Sleman Regency. The Task Force was formed considering that it is very important to need because most of the provinces in Yogyakarta that have contracted the corona virus are in Sleman Regency, creating a Task Force to strengthen coordination in handling COVID-19 in Sleman Regency.

The private sector was instrumental in the service business in Slemen district, this is because the SWAS ta the birth of a movement that fallow s al of masyarakat. Muhammadiyah is private organizations and social movements are quite influential in Indonesia one of which also occur in Kabu p aten Sleman.

Collaboration occurs between the government and the private sector, the private sector, in this case the Muhammadiyah Disaster Management Center (MDMC) participating in the handling of COVID-19 in Sleman district. MDMC saw that from March there was the first case until April MDMC decided to form the MCCC (Muhammadiyah COVID-19 Command Center) a special team to anticipate the spread of the corona virus .

To determine the success of the collaboration between the government and the private sector, the researchers processed data from sources from the 3 indicators, including:

The Sleman Government's Collaboration in Combating COVID-19

Togetherness is a foundation in conducting cooperation without any *Priniciled Engagement* is not going to run collaboration as appropriate. K Gov together will go well if every *stakeholder* that involved cooperation capable of well established with the other party or parties outside that can lead to mutual trust. Collaboration is not only collaborating but to achieve common goals. This can be seen from the joint principle movement carried out by the Sleman Regency government with the MCCC

through coordination in program implementation. According to Mr. Dwi as the Task Force Coordinator stated that:

"With MDMC, the collaboration in the form of agreements and education in the early field of the COVID-19 MCCC participated in spraying with several other volunteers, there were bangser and other disaster communities, all of whom joined the TNI, POLRI from the SKPD (Regional Warfare Work Unit) all participated, gathered here for a week we coordinators, we laksanakan we do the division and spraying some point. "

Togetherness in dealing with a problem is one of the solutions to overcoming natural disasters. D nature of this case pandemic COVID-19 disaster that is different from the previous disaster, of c fig handling is also different. D en gan togetherness conducted P he Government of Sleman with the private sector is certainly not easy, and therefore a much needed coordination, as well as to make this a common goal. The following is **Table 1.1** Cooperation between the Government and private parties:

Table 1.1 Public and Private Partnerships

NO	PROGRAM BERSAMA	Gugus Tugas	Target	MCCC	Target
1.	Penyemprotan Desinfektan	Di lingkungan ruang pemerintahan	a. Pasar b. Sekolah c. Kantor d. Rumah Sakit e. Tempat ibadah	Di lingkungan Sekolah dan Tempat ibadah	a. SD Muhammadiyah b. SMP Muhammadiyah c. SMA Muhammadiyah d. Masjid di Kabupaten Sleman
2.	Pembagian Bantuan Sembako	Pemberian seluruh masyarakat	a. Pos pantau komunitas KSM b. Pos pantau Turgo Asri c. Pos pantau Desa Umbul Harjo d. Pos pantau Desa Kebo Harjo e. Pos pantau Sardinmas	Pemberian bantuan yang belum tersentuh pemerintah	a. Masyarakat Muhammadiyah b. Guru Huhammadiyah c. Kaum Lansia
3.	Sosial Edukasi	Ruang Publik seperti pasar	1. Pasar Pakem 2. Pasar Tanjung 3. Pasar Godean	Di perkampungan warga	a. Desa Brajan b. Desa Bugisan c. Desa Cucukan d. Desa Geneng e. Desa Joho f. Desa Kebon Dalem Kidu g. Desa Kebon Dalem Lor h. Desa Kemudo
4.	Ruang Pendidikan	Pemerintah memberikan kebijakan belajar daring	1. SD 2. SMP 3. SMA 4. Perguruan Tinggi	Meinstruksikan untuk belajar daring	1. SD 2. SMP 3. SMA 4. Perguruan Tinggi

Source: Task Force and MCCC, 2020

The main tasks carried out by the government include conducting intensive communication with the stakeholders involved and all elements of the Government Task Force Sleman, one of the Task Force's concrete actions, spraying disinfectants in homes and residential areas, places of worship, and other public places, as well as providing hand washing facilities at a number of points.

The government has a perspective that *Principled Engagement* in the eyes of the state is aware that it cannot be built only from the political structure of government alone. However, the state is the unity between the people and certain people who mutually meet and related to the common good. The role of the state as the only single actor capable of carrying out everything is starting to lose its relevance at this time. Concerns about the economic crisis caused by excessive state spending have resulted in new development ideas being taken into account. Margaret Thatcher and Ronald Reagan as government leaders as quickly as possible implement the economic reforms which became known as Reaganomics and Thatcherism. Both agreed that the role of the state must be minimized and the role of the private sector strengthened. This begins with the strengthening of the role and independence of the public in fulfilling their needs, in another form this is the implementation of democracy by minimizing the role of the state because the people are aware that they have a movement to fulfill the goals of the state which also starts with the public.

The nature of independence has appeared in the general public in the area of Sleman District, which independently has been able to meet some of its needs through services provided by private parties. It can be seen that the MCCC in Sleman government can make the public more aware of the efforts that the government is optimal for society Sleman.

Establishment of the Sleman Regency Task Force

The task force to break the corona virus chain is like forming a task force for handling COVID-19 in Sleman Regency. This working group was formed considering this is very important, because most of the areas affected by the corona virus in Yogyakarta are in Sleman Regency, and he formed a working group to strengthen coordination in handling COVID-19 in Sleman Regency. In dealing

with COVID-19 in Sleman Regency, a Circular Number 440/5184 / SJ of Sleman Regency is required regarding the formation of a task force for handling COVID-19, and a task force is needed. Describe the task force's first task to carry out and control the implementation of strategic policies related to COVID-19. Mr. Dwi who interviewed the head of the representative task force, served as the coordinator of: "Now in the post decontamination have a duty of care penglaseran jenaza , so people who died but not in the hospital yes , in neighborhood it feared the possibility that exposed covid , so the treatment of jenaza it from volunteers covid , so residents bathe and mengnguburkan , but decontamination lever "

The task force implements and controls the policies issued, such as volunteering the task force to help residents who died by washing and burying according to the applicable protocol. With the aim of awareness of society in a state government against future pandemic is by letter of the decision B Upati S leman No. 66.1 / Kep.KDH / A / 20 On COVID Management Task Force-19 in the district of Sleman , government issue the policy in order to minimize the transmission of the virus corona .

K Secondly , the task includes solving the problems of the implementation of strategic policies Berka Itan with handling COVID-19. D nature of this case to solve the problems COVID-19 at Sleman Regency with their quick handling meny edikan infected. Mr. D wi conveyed in the interview as follows:

"The Task Force provided 3 isolation posts for the infected, first the pilgrim boarding post, the de- contamination post , and the addition of a post in early November at the Rusunawa , so for Karang Tina there are two locations in the Haj and Rusunawa dormitories "

The government is handling COVID-19 very quickly. The government has taken preventive steps to minimize the spread of Sleman Regency, including data collection, application of social distancing, socialization of healthy living habits, and strengthening supervision of the entry and exit of residents. The team recorded people who are vulnerable to the disease, residents who have returned from other provinces and even abroad, to detect the spread and monitor the people being monitored. By requiring passengers to isolate themselves for 14 days and ensuring there are no large-scale activities, the government is still confused about how to deal with COVID-19, because currently the government cannot say that it has

succeeded in dealing with this COVID-19, so the government can only try to minimize the virus.

K etiga , the task of the task force that includes the monitoring and implementation of the strategic policy relating to the handling of COVID-19 inside. Mr. Dwi as representing the Chair of the Task Force said:

"Now groups , even some sort of meetings have been carried out, but on condition that they obey health protocols , wear masks, keep their distance, wash hands in a narrow and closed room that must be paid attention to ."

In crowded places, it is very easy to catch the corona virus or COVID-19. Therefore, please do not be in a crowd, especially in a room with poor air ventilation. If you are forced to squeeze in a crowd, don't accidentally touch areas such as your nose, eyes and face , especially if you haven't washed your hands. The government, especially the Task Force, always reminds the public to comply with health regulations under normal circumstances. Local governments have neither prohibitions nor restrictions, but the government always reminds them to comply with government health regulations, in this case the task force can only supervise. The government supports community organizations, if people gather in their respective areas, Muhammadiyah will monitor each other and remind that sanitation agreements must be implemented.

Fourth , establishing and implementing policies and other steps needed to accelerate the handling of COVID-19, the Sleman government. Rapid *stracing* tests at market locations across Sleman and other crowds with the Health Office . G agus T duties as set this program to ensure there is no spread COVID-19 between merchants and buyers in the traditional market. P asar traditionally been for beraskan observation, not all sellers and buyers implement health protocols. Even though the market is a place where people from various regions gather. When in public places public , should not be touching the elevator buttons, door handles, banisters or escalator, if you must touch, you should use a tissue or sleeve dansegera wash hands afterwards.

The process of forming G agus T duties as COVID 19 in K abupaten S leman formed by rapidly than other regions. This certainly can not be separated from experience P he Government of Sleman in disaster penanganan earlier , due in a decade has occurred several times terakhir disaster Merapi volcano , especially

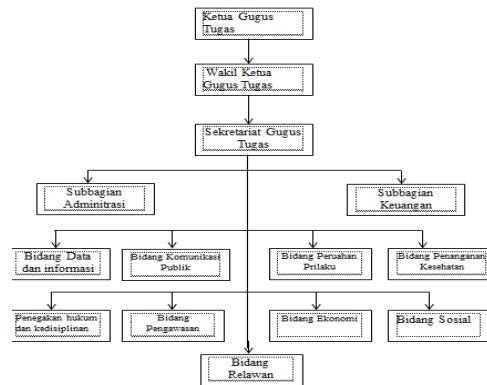
fulkanik occurring on their territory. A policy implementation can be said to be real according to Van Horn & Van Mett e if it meets six requirements, namely 1) Policy size and objectives, 3) Policy sources, 3) Characteristics and characteristics of implementing agencies / agencies, 4) Communication between related organizations and implementation activities, 5) The attitude of the implementers, and 6) The economic, social and political environment.

Judging from dielurkannya caution the government against future society in a state of pandemic this , by letter of the decision B Upati Sleman No. 66.1 / Kep.KDH / A / 20 On COVID Management Task Force-19 in Sleman . In the task force T duties as, is appropriate in theory Impelmentasi policies by Van Horn and Van Mett e , which therein describes the implementation of policies as well as policies made by the Government of Sleman through task Task Force that has been made.

Establishment of the Sleman Regency Task Force Structure

Sleman Regency formed a task force to further strengthen and strengthen coordination in handling the spread of COVID-19 in Sleman Regency, so that Sleman Regency formed a COVID-19 task force. With the formation of the task force, the main control authority rests with the responsibility of the head of the task force, the regional secretary. The implementation process will involve all departments and levels in an integrated and orderly manner . The health office will be the coordinator of the health department task force. The most important thing is to determine that all health institutions in Sleman are fast, accurate, right on target, integrated and synergistic between government and private institutions and institutions. Collaborative management and applicable assignment of responsibilities need to be done because there is no single solution for the spread of COVID-19. The following is the organizational structure of the Task Force **Chart 1**

Chart 1. Management of the Task Force
Sleman Regency



Source: Sleman Task Force , 2020

The Task Force management chart for the smooth running of the programs that have been made, and also the Sleman Regent is the direct chairman of the Task Force implementation.

Government efforts to form collaborations with the private sector

The *Corona Virus Disease 2019* (COVID-19) Task Force is a policy issued by the government, to coordinate between the agencies involved in overcoming the COVID-19 virus that is spreading in Indonesia. Presidential Decree Number 7 of 2020 concerning the Task Force to tackle COVID-19. The Task Force is an action to accelerate the handling of COVID-19 which requires fast steps, precise integrated and synergistic focus among other stakeholders .

As in the socialization program conducted by the Task Force and MCCC . MCCC has a program to compile specific guidelines related to behavior, worship, daily life for the community by implementing a clean and healthy lifestyle and how to stop the spread of the corona virus. public education about the importance of *social distancing*. This activity is in order to reduce the spread and minimize casualties due to the Corona outbreak in the Sleman district.

Mr. Joko as Secretary of the MCCC representing the Chair of the MCCC said:

"In terms of cooperation with the government program MCCC more possible in nature to the internals of Muhammadiyah, perhaps the nature of cooperation with the government, cuman to note us that Muhammadiyah was 2 yearly once to fund

hiba of Sleman and this year because of funding pandemic , the budget all of which for the organization are directed towards handling COVID-19 "

MCCC conducts education invites governments to collaborate. MCCC confirmed to the Task Force whether there are programs in the Task Force in tackling COVID-19 such as socialization. Seeing that the Task Force and MCCC have their own programs, so the MCCC in carrying out their programs requires support from the government and outside parties , in carrying out the socialization of COVID-19 prevention education in Sleman Regency.

A danya the role of community organizations / mass organizations / NGOs / social movements is a common thing found in democratic countries. Even in many aspects, collaboration with the state or vice versa is a form of the integrity of a society. Ormas / NGOs / social organizations are part of civil society which, according to Mouzelis, aims to contribute to effective law enforcement in order to protect the interests of society from government arbitrariness. Strongly managed civic groups will be able to supervise abuses of power by those who have control over the administration and means of coercion. They present a state of pluralism that is balanced among the interests of the community so that there is no chance for either party to dominate absolutely.

The government has the right to force people to abide by the rules that exist, would be but the role of community organizations to mediate between the government and the public. In the government has the role of coercing law and society who live the rules. With this socialization, it becomes a controller of society, so that in implementing regulations it does not appear to be forced to run. The role of community organizations so that people do not feel forced to carry out the rules, education is a means to control society. (Ari Ganjar Herdiansah, 2016, 49)

An explanation of the process of government and elements of sustainable dantara private / NGO / social organiasi as well as control signs in a democratic country, a statement relevant to Giddens which states that if , social movements contain a strong kolektuf action. However, even though this theory initially describes social movements that are opposite to the state, still in the pandemic contest in Indonesia, the problems of crisis and pandemic can trigger collective action in a positive way, thus forming a collaboration in the form of a joint movement.

In its application to understand the cooperation between the government and the private sector to deal with a pandemic, the actual collaboration is a process

between private parties / NGOs / social organizations in revealing collective problems, which in this case is a pandemic, then the collective problem is confronted by the government as the highest authority. In collaboration just indirectly collaboration resulted in the government's position that became part of Kehendak collectively in menanggapi permasalahan bersama.

Motivation with the Sleman Government and MCCC in Handling COVID-19

Establishment of MCCC Sleman Regency

The Muhammadiyah Central Leadership (PP) formed a new institution specifically dealing with the corona virus (COVID-19). This institution is called the Muhammadiyah Covid-19 Command Center (MCCC). This institution was formed not only at the center, but also in every Regency / City and Province as an extension of the central arm. The formation of the MCCC is Muhammadiyah's participation as well as a real contribution in facing Covid-19. Within Muhammadiyah, the MCCC becomes a kind of task force or institution in dealing with Covid-19 which was formed through PP Muhammadiyah Decree Number: 2825 / KEP / I.O / D / 2020 dated March 15, 2020. MCCC is a realization of the PP Muhammadiyah assignment, so that there is coordination between the Public Health Advisory Council (MPKU) and the Muhammadiyah Disaster Management Center (MDMC) or the Disaster Management Agency (LPB). In its implementation, the MCCC Team contains representatives from LAZISMU, Diktilitbang, Dikdasmen, and all Muhammadiyah Ortom,

The formation of special teams through the process of coordination, with Majelis Disaster Management / LPB atau lebih familiarly called by MDMC (*Muhammadiyah Disaster Management Center*). MDMC is engaged in disaster management activities according to the definition of activities. P Disaster Management and Mitigation activities both on Preparedness, Response and Rehabilitation. In contrast to this, the formation of the MCCC is the implementation of emergency response steps in the MDMC task.

This institution is the center for handling COVID-19, in addition to autonomous organizations (orthom), especially Aisyiyah, Nasyatul Aisyiyah, Pemuda

Muhammadiyah, and Hizbul Wahat, who still contribute to handling COVID-19 under the coordination of the MCCC . The participation of these orthoms is related to the tasks and programs of several orthoms that have sub-assemblies / or fields related to disasters , MCCC was formed as Muhammadiyah's response to the global conditions of COVID-19. This institution is the center for handling COVID in Muhammadiyah .

Mr Joko as secretary of the MCCC Sleman said:

"Initially, from the central leadership of Muhammadiyah, seeing that the development in the regions also needed to be handled, the increasing number of people who were infected, then how can we protect Muhammadiyah citizens to the lower levels, finally from PP instructed the formation of a Muhammadiyah that focused the handling of corona to the sub-district level"

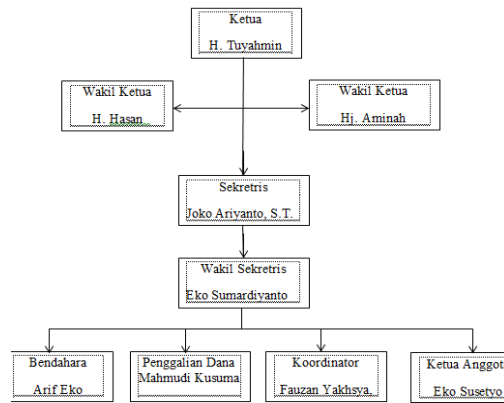
MCCC assistance is certainly not an instant thing in Muhammadiyah, however the policy is related to the thought process that occurs within Muhammadiyah to interpret a disaster. According to Falaudin, in viewing disasters, Muhammadiyah always links normative texts in the Koran and Hadith with modern science. As a mass organization that carries the jargon of tajdid, Muhammadiyah's perspective in seeing social realities, including COVID-19, always uses an integrative approach: bayani, burhani and irfani.

Muhammadiyah or MDMC conscious will of disaster is happening now, which many life threatening Muhammadiyah up in a special team was formed to anticipate the spread of the virus. The implementation is carried out by MCCC in their respective regions, in raising funds from the regions, after MCCC, especially Sleman Regency, is in the form of funding for its entry into the regional MCCC. MCCC helps facilitate the coordination of things that need to be communicated, such as when a Muhammadiyah member at the MCCC branch is infected with MCCC helping to communicate the quarantine process , MCCC when the government has not been responsive in handling its logistics, MCCC responds quickly.

The MCCC team that was deliberately formed specifically for handling COVID-19, MCCC Sleman has programs that can prevent the transmission of COVID-19 in Sleman, MCCC was formed through the Muhammadiyah organization whose membership is MDMC. MCCC also established a management structure to help prevent the corona virus based on Decree Number 18 / KEP / III.o / A / 2020

concerning the MCCC central coordinator team for the Muhammadiyah Sleman Regional Leadership . The following is the management structure of the MCCC based on the PDM Sleman decision letter Number 18 / KEP / III.o / A / 2020 concerning the MCCC coordinating center team as shown in Figure 1.2 :

Chart 2. MCCC management



Source: MCCC Sleman , 2020

The management chart of the MCCC members of which are recruited from volunteers from the Muhammadiyah community who are willing to become members in carrying out programs created by MCCC with the aim of the welfare of the Muhammadiyah community itself.

MCCC's Joint Understanding with the Government

The formation of a special team for handling COVID-19 was based on the fact that the Muhammadiyah organization was aware of collaborating so that they could solve this problem together. Mr Joko as secretary of the MCCC Sleman said:

"Disaster COVID-19, another disaster is not like a natural disaster catastrophe volcanos and floods and the other, maybe the coordination like eruptions of Merapi in 2010 we are from the beginning of adjusting of recommendation mendasi of government, if disaster COVID this right does the government have the handling pennies themselves. Muhammadiyah also has its own handling, because indeed some things that fall under the authority of our government, the system is just to follow, we collaborate in the technical department and when there are activities in the field we can make adjustments . "

Muhammadiyah's steps to establish itself in building relations with the government, take place in a balanced manner and are in need of one another. it is the

basic character of Muhammadiyah which seats the state in this case is the government authorities in hubungan realasi proporsional reciprocal, because he berpenda ngan if the relationship between M uhammadiyah and P he Government will bring positive influence to society.

"Muhammadiyah is always present when the nation and humanity call when there is a problem. Likewise, when the COVID-19 pandemic became a disaster that hit Indonesia and the world ". Natsir Haerdar statement is hinted two things: First, the life of mankind in this world is always skipped and filled by various disasters. Disasters have become part of the sunnatullah in this life which cannot be denied, but at the same time must be faced. Second, Muhammadiyah's commitment to being actively involved in humanitarian missions. (Haerdar Natsir , 2020)

Common understanding in the treatment and prevention of COVID 19 to perhatian shared between Muhammadiyah which in this case is the MCCC and the government is looking into the various activists v bag together, especially in the field of education. One of the three universities Muhammadiyah namely UNISA (University Aisyiyah) located in the area of K abupaten Sleman, seen from the P he Government of Sleman issue a decision for organizing the learning online on teaching and learning in seluru K abupaten Sleman, then this is also in response to the UniSA with adjusting the learning implementation policy.

In a circular letter from the Diktilitang class to PTMA on March 22, 2020, it was followed up if the implementation of education in all Muhammadiyah universities was carried out online. In addition, there is also an appeal if all PTMAs that have health-related departments can contribute as much as possible to the management and prevention of COVID in their respective areas by coordinating with the local government. Unisa as a university that focuses on health majors , can then easily collaborate and contribute with the Seman local government in handling Covid 19 . H al is evident in health personnel and medical supplies in some post in Sleman in getting university Aisyiah.

MCCC collaborated when the government asked Muhammadiyah to establish, such as spraying disinfectants and other field techniques . Even though the government has its own program, indeed some of their policies do have the authority. MCCC also has its own program even though it is not requested by the

MCCC government, as well as possible or has the initiative to carry out programs such as the distribution of basic necessities to the listed Muhammadiyah honorary teachers .

MCCC distributed basic foodstuffs, reaching more than 3,000 food packages. Muhammadiyah will always and continue to move to answer the challenges that occur in society and one of them in dealing with the impact of the COVID-19 pandemic , as a form of struggle for the benefit of the people . The source of funding for these activities comes from donations from the leadership, management, and residents of Muhammadiyah Sleman. Appropriate, fast integrated actions are also well established and between local institutions and apparatuses such as the government and private parties Muhammadiyah Sleman through the MCCC along with all elements of the leadership, assemblies, and institutions down to the branch leadership level along with all autonomous organizations and their charities have taken a lot to take part in overcoming and breaking the chain of COVID-19 in Sleman.

Looking at the relationship that has existed between the MCCC and the Sleman Government , this is relevant to strengthening the role of non-state actors and their relations with the state can be summarized into one important point, namely the partnership described by Alex B. Brillantes, namely

... Partnership is a key pillar of good governance. Partnerships may be between various levels of government (national-local, local-local), or partnerships between government and civil society (government-non-government)... (Alex B. Brillantes , p. 89)

Then, *Partnership* here is defined as the existence of a close relationship between the government and other actors, including non-state organizations. This cooperation is becoming so important in view of a k tor country in the process of disaster management particularly in view of *recovery* are faced with various limitations. Limitations that is the chance of various organizations / a k tor non-state in implementing the action that is applied to the relationship between the Government and the MCCC.

Ethically Muhammadiyah supports the Government well. The Government also with Muhammadiyah considers this positive for the Government. Thus there is a good relationship between the Government and the private sector, namely the

MCCC. It is also the Pandemic COVID-19 shows the participation sertaan Muhammadiyah in matters of government to react with together. With the existence of Muhammadiyah it can ease the burden on the Government, the Government certainly has limitations and Muhammadiyah also has shortcomings, therefore the Government and Muhammadiyah establish a *partnership*.

MCC Legitimacy Work Program

The design of the *Muhammadiyah covid 19 command center* (MCC) work program in Sleman Regency. In general, *Muhammadiyah Covid 19 Command Center* PDM Sleman is tasked with coordinating the implementation of programs and actions in handling COVID 19, especially in the Sleman Regency Organization, in order to assist the Government in breaking the chain of the spread of COVID 19. based on the PDM Sleman decree No. 18 / KEP / III.o / A / 2020 About team coordinator center MCCC following **Table 1.2** Program MCCC Sleman.

**Table 1.2 MCCC Programs
Kabupaten Sleman**

NO	Team Section	MCCC Work Program MCCC Work Program
1.	Daily Team Chairperson and Secretary	Build communication with the Government and Muhammadiyah stakeholders
2.	Treasurer and Logistics	<ul style="list-style-type: none"> - Manage the financial circulation of the MCCC - Carry out an inventory and procurement of necessary goods - Procurement of basic foodstuffs for Food security for Muhammadiyah residents who are directly affected by Covid 19

NO	Team Section	MCCC Work Program MCCC Work Program
3.	Fund Excavation Division	<ul style="list-style-type: none"> - Coordinate penggalangan funds for Handling Covid 19 Muhammadiyah Sleman to the congregation and Aum education through LAZISMU - Inviting the participation of government and private institutions
4.	Emergency Response Division	<ul style="list-style-type: none"> - Opening the MCCC Coordination Post (POSKOR) for Sleman Regency - Human resource data collection - Distribution of Piket Poskor duties - Coordinating the Disinfectant Team - Conducting outreach related to Covid 19 and Health Procedures - Distribution of masks, disinfectants, hand washing soap and hand sanitisers - Coordinating with the Sleman Regency Government Task Force
5.	Social Advocacy Division	<ul style="list-style-type: none"> - Data collection on the number of orphanages - Inventory of social impacts among Muhammadiyah residents due to Covid 19 - Communicating existing problems
6	Medical Division	<ul style="list-style-type: none"> - Make media socialization associated Virus Covid 19 - assistance, monitoring of Muhammadiyah residents who are positive for Covid 19

Source: MCCC Sleman Regency, 2020

The programs were made with the aim of reducing the burden on the Sleman government , and also running the programs that have been made to be carried out as well as possible .

Commitment between the Sleman Government and the MCCC

The communication of the Sleman government with the MCCC itself is not good, the MCCC carries out its performance and the Government runs the program itself. MCCC as NJO Muhammadiyah cares about this disaster as much as possible to help the government, by getting minimal information through members , MCCC , who also works in the Sleman Task Force, received information when the Task Force will carry out its Program and MCCC will participate in implementing the program.

Mr. Fauzan as the Sleman MCCC Coordinator said:

"Actually, in terms of coordination, if it is deemed necessary, for example we who need our support only coordinate with the cluster team , and vice versa if for example the Task Force team needs it from the MCCC, we are also willing"

When there is an activity running the Task Force Program , one of the task force members will communicate with the MCCC to participate in the implementation, on the other hand, when MCCC runs its program, such as the program providing basic food supplies to Muhammadiyah teachers in Sleman Regency. then MCCC try to collaborate with Gu gus Task propose that, MCCC has Sembako Distribution program for teachers of Muhammadiyah, air-coordinated with Task Force team has a program towards there or not, then the government has a program of cooperation MCCC and Task Force established.

A commitment between the Government and the MCCC that can run well can be seen from an understanding if COVID 19 is a real disaster, but in reality it is also difficult to overcome its effects. So the disaster in the agreed contest , the things that have been resolved and trying to recover / recover for the victims and survivors. However, the formation of this commitment is not an easy thing. Andrew Maskrey also expressed concern about this way of thinking :

Major disasters move societies and governments to create risk management systems and institutions, but in many cases their resources, influence and political strength tend to weaken when the memory of the disaster begins to vanish (and this happens very rapidly)... But despite that, the existence of those systems is an advance in terms of society's provision for disaster preparedness and response, but the tendency is that in practice these systems concentrate efforts in emergency response not in changing the conditions that create risks that become disasters . (Maskrey , Andrew. 2020)

From the explanation above, it can be understood that disaster risk reduction is an important part of the *recovery* process without forgetting its general aspects (restoring basic needs) so that post-disaster conditions will result in a "normal" state which has been equipped with a new awareness of disasters.

The Sleman and Muhammadiyah governments view the COVID-19 problem as seeing the same problem, therefore they make a commitment between the Government and Muhammadiyah. They see it must be resolved together and therefore the Government and Muhammadiyah considers this problem to be in *recovery* (restored).

Joint Program for a Framework for Cooperation

The MCCC special team was formed to tackle the COVID-19 Virus, which MCCC sees that it is increasingly having an impact on people's lives, especially for Muhammadiyah people. MCCC is also the team that understands what the community needs, not only MCCC has a program to listen to the aspirations of the community as well as the Task Force has programs that help the needs of the community.

In people's life, the most important thing is health and fulfilling everyone's needs, surely through these needs, namely by buying needs in the market, the market is one of the places that is always crowded with people. The market is a gathering place for people from all over the village and region, seeing the situation and conditions of this pandemic. The Task Force and MCCC formed a program to carry out spraying throughout the market, providing socialization to always comply with health protocols wherever they are.

Mr Rohmadi as an MCCC Volunteer said :

" What we always emphasize to the public is to always wear a mask and then keep as much distance as possible to avoid the crowd, if necessary go to the market as needed, wash your hands"

MCCC and the task force in new normal cannot prohibit people from staying at home only. The Government already memperbolehkan community to beraktivitas as usual, will be but the Task Force and MCCC always insisted that maintaining the health anywhere, follow the health protocol. The government wants the public to

follow the rules made by the Task Force as the team handling COVID-19. The following is **Table 1.3** Joint Program of the Task Force and MCCC.

Table 1.3 Joint Programs of the Task Force and MCCC.

FIELD	Cooperation Program
Social	a) Socialization of the COVID-19 disaster b) Implementation of Health Protocols
Economy	a) Social Assistance b) Economic recovery
Health	a) Provision of Health Facilities b) Nursing c) Victim Evacuation
Education	a) Adaptation to the COVID-19 disaster b) Virus prevention in educational environments

Source: Task Force and MCCC

The table above is a program run by the government and the private sector, namely in overcoming the COVID-19 virus. The program is mutually berherhubungan one each other , with the aim of achieving the purpose biersama . The Sleman government was greatly helped by the activities carried out by MCCC to ease the burden on the government in dealing with this complex disaster.

Development of Collective Action and Influence for Society

Cooperation carried out is with the aim of achieving common goals. D nature of this case, namely government's cooperation with the Task Force is an organization Muhammadiyah Private parties are in the form of MCCC, government and private sector cooperation is not only just now , but the government and MDMC always entered into a collaboration to solve problems and find solutions together. The Task Force and MDMC have their own programs but the aim is to prevent the spread of the corona virus, they are not only doing the programs that have been carried out but the government sees things that must be done in the future . MCCC is also responsive

to what the government needs, one of the MCCC programs in the future, namely spraying in schools throughout Sleman district.

Mr. Fauzan as the coordinator of MCCC said:

"The task force has never invited the MCCC to discuss future programs , so the impression is that they are still working separately, but there is indeed an MCCC program with the government's Task Force that can work there, but for us it still tends to run independently.

MCCC and Task Force already has a program selanjutnya , namely spraying schools in kabupsten Sleman given in December of schools have d i want to learn face to face. MCCC hopes that the government in this case the task force can embrace the MC CC and can communicate well, so that this collaboration is established as expected, MCCC has full support to the Task Force so that the program that has not been maximally implemented MCCC through the next program wants the government is more embracing the existence of MCCC in Sleman Regency. In the context of handling COVID 19 , Muhammadiyah cooperates with BNPB (National Disaster Management Agency) by exchanging information about the state of volcanoes, information on refugees, disaster-prone areas. This collaboration between Muhammadiyah and the Government is considered important for Muhammadiyah considering that the Government is an actor who plays a significant role in the recovery process. Muhammadiyah does not have the government's ability to build houses, for example. The cooperation that is built is expected to complement each other between the two parties in the context of disaster management.

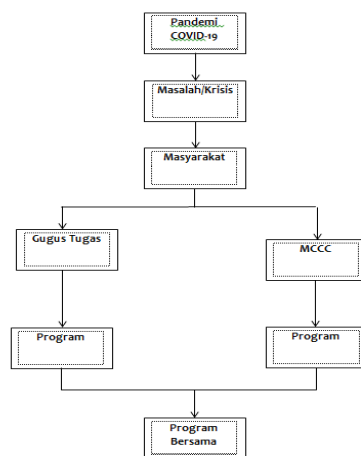
The disaster management network that was built by Muhammadiyah with MDMC as the coordinator did not stop at the internal level of the organization. In its development, as part of a broader disaster management effort, Muhammadiyah has included external actors in its network . At least two groups were included in the Muhammadiyah network. First is the Government. The second actor that is no less important is other organizations / NGOs / institutions that are engaged in disaster management. In the context of Merapi, Muhammadiyah seeks to build networks with various institutions / organizations that are both engaged in disaster management .

The programs carried out between the MCCC and the task force do not involve coordination between ministries and agencies, both at the central and regional governments. As of November 2020, Muhammadiyah has collaborated with DAFT,

namely the Australian trade department through the Ministry of Foreign Affairs to collaborate in a program called GETAPAK (Family food security movement). This movement aims to build a new economic base for the most vulnerable families affected by Covid 19, especially in productivity to meet basic needs, namely food (Budi Setiawan; 2020, 5)

GETAPAK in langsung cooperate d ith MCCC at the regional level and coordinated with social services Sleman district in penentua n subject beneficiaries. Sleman district was included in klater who gets priority in the implementation of the program, This is caused by many things and travel filthy affected services so that it takes the role of government and keterleibatan MCCC beserata in penoptimalkan prog ram.

SLEMAN GOVERNMENT WITH PRIVATE KOLABORATION SCHEME



Source: Researcher, 2020

From the chart above can be seen, the process of kola b oration Sleman government and Muhammadiyah occur. The CO VID-19 pandemic that hit the people of Sleman Regency, caused a disaster for the government. This has an impact on the entire community, especially Sleman Regency. The government is responsible for this problem, not only the government, the private sector participates in helping the government to solve existing problems. The government made programs to minimize the spread of the COVID-19 disaster, Muhammadiyah H also created programs with the aim of reducing the burden on the government. Both programs are run and help each other with a common goal.

CONCLUSION

Based on the results of research on Collaboration government with the private sector, with a focus on handling pandemic COVID-19 in Sleman. Then it can be concluded that the collaboration of the government and Muhammadiyah have been intertwined with both the phase of the disaster. This is due to the collaboration between the government and the private sector. Many collaborations have made policies that can minimize disasters.

The collaboration that occurred between the government and Muhammadiyah, had established a relationship and had a coordinator long before the disaster occurred, the government and Muhammadiyah had not been coordinating for the first time but had collaborated several times.

Collaboration between the government and Muhammadiyah, delayed hit by the pandemic COVID-19, made the government make policy management team especially in the face of the corona virus. By since the task force was formed, the program that created the task force to coordinate with the central government. Muhammadiyah as an organization that has influence in Sleman to see this plague spreads rapidly increasing Muhammadiyah parties decided to form a team specialized in penanggulangan Disaster COVID-19 which MCCC.

Collaboration between the government and Muhammadiyah, when disaster Tugus duties as and MCCC create its own program but also the program of these two teams have in common, in performing the task force collaboration and MCCC. Some programs to fit their respective functions, MCCC team is an organization that was born out of civil society organizations while the cluster tugas in the form of government.

Collaboration that occurs between the government and Muhammadiyah, the MCCC as a liaison between the community and the government, while the government is the liaison from the government to the community, these two things are what make the task force team and MCCC work together, so that what happens in society can be heard by the government. The government also makes programs to be aimed at the community.

REFERENCES

- Ari Ganjar Herdiansah, " THE ROLE OF COMMUNITY ORGANIZATIONS (ORMAS) AND SOCIETY INSTITUTIONS (NGOs) IN SUPPORTING DEVELOPMENT IN Indonesia " Jurnal, Sosioglobal, Bandung, Unpad, Bandung; 2016, p. 54
- Alifiulahtin Utaminingsih et al, "Implementation of Disaster Management Policies: Studies on Malang district government", Proceedings, Surabaya, Senabisma p. 17,
- Alex B. Brillantes, Learning from Disaster Recovery Guidance for Decision Makers, A Publication from the International Recovery Platform (IRP) Supported by the Asian Disaster Reduction Center (ADRC), International Strategy for Disaster Reduction (ISDR) secretariat and United Nations Development Program (UNDP), May 2007, p. 3.

- Al-Hamdi, Ridho , DKK (2020). Handbook Qualitative Research Government Science Students. Student Libraries. Yogyakarta
- Akhmad Purnama and Murdiyanto (2015) "Distribution of Aid for Natural Disaster Victims A Case Study of Restoring the Life of Natural Disaster Victims in Jayapura City".
- Anam, K., et al (2018). Readiness of Local Institutions in Facing Tsunami Disaster: A Case Study of Air Manis Sub-District and Purus Village, Padang City. *Journal of Territory and Environment* .
- Atika Zahra Rahmayanti (2014) "The Role of Fiscal Decentralization in Disaster Management in Indonesia".
- Bima Jati, BJ, & Putra, GRA (2020). Optimizing Government Efforts to Overcome the Covid 19 Pandemic as a Form of Fulfilling Citizen Rights. *SALAM: Journal of Social and Cultural Affairs Syar-I* .
- Dimas Qulatioqh Chusna, "Collaborate Govermet: Study of the development of a minipolitan area in Sidoarjo", in the Journal of Cultural and Political Societies, Surabata, 2016, p. 4
- Dwi , Kusuma. 2020. MCCC Initiation of Family Food Security. <https://covid19.muhammadiyah.id/mccc-inisiasi-movement-ketahanan-pangan-keluarga/> . (accessed July 15)
- Falahuddin (2020) Muhammadiyah's Response to COVID-19. Maarif Institute. West Nusa Tenggara.
- Erwin, Edi Indrizal (2014), "Natural Disaster Management Management Description of Inter-Relationships and Readiness of Parties in the Rehabilitation-Reconstruction of Houses for Post- Earthquake Affected Residents in Tanah Datar District "
- Emerson, K., & Nabatchi, T. (2015). *Collaborative Governance Regimes*. Washington, DC ,: Georgetown University Press.
- Haedar Nashir, "Muhammadiyah Gait", Republika, Friday, April 17, 2020.
- Maulana Mukhlis (2016) "Governance in Enhancing the Adaptive Capacity / Resilience of Bandar Lampung City Against the Impacts of Climate Change".
- Muchamad Zaenuri (2014) "Managing Tourism-Disaster: The Need for a Change in the Paradigm of Tourism Management from Adaptive Governance to Collaborative Governance".
- Mutiarawati, T., & Sudarmo. (2017). Collaborative Governance in Handling Rob in Bandengan Village, Pekalongan City. *Journal of Public Discourse* .
- Nurhadi, M. 2020. Quick Steps to Fight Corona, Sleman Regency Forms COVID-19 Task Force. <https://jogja.suara.com/read/2020/03/24/062000/langkah-fast-lawan-corona-kab-kabupaten-sleman-bentuk-gugus-tugas-co>
- Purnomo, Sri. 2020. Covid 19 Task Force Strengthens Corona Response in Sleman. <http://www.slemankab.go.id/16418/task-force-covid-19-strengthening-prevention-corona-di-sleman.slm> (accessed March 24, 2020)
- Purnomo , Sri. 2020. Collaboration Forkopimda Sleman, United Against Covid-19. <https://jogjapolitan.harianjogja.com/read/2020/05/15/512/1039281/kolaborasi-forkopimda-sleman-bersatu-melawan-covid-19> . accessed 15 May 2020)

- Rachel S. Turner, *Neo-Liberal Ideology History, Concepts and Policies*, (Edinburgh: Edinburgh University Press), p. 107.
- Sahilala, MI, Sarwono, & Hanafi, I. (2015). Administration of Disaster Victim Logistic Assistance Distribution Nature (Empirical Study on Flood Disaster in Bojonegoro Regency). *Journal of Public Administration* .
- Sadat, A. (2019). Intergovernmental in Natural Disaster Management in Local Government. *Kybernan: Journal of Governance Studies* .
- Taslim, I., & Akbar, MF (2019). Public Coordination for Flood Disaster Risk Reduction in the Implementation of Sustainable Development in Gorontalo. *Journal of the Region and the Environment* .